



Monitoring in Support of Aquatic Habitat Toronto

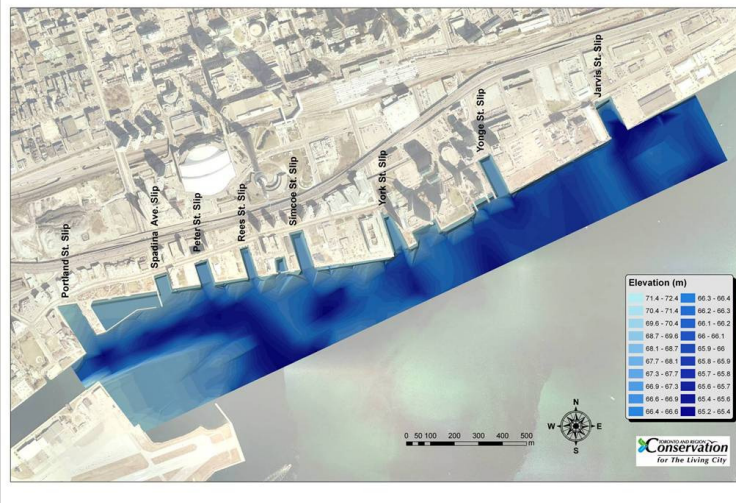
AQUATIC HABITAT TORONTO



Central Waterfront Aquatic Habitat and Vegetation Surveys



Central Waterfront Bathymetry



WHY DO WE MONITOR?

- Biophysical inventories are the foundation of sound environmental planning and assessments.
- Environmental monitoring is often required before, during and following construction activities to ensure that habitat mitigation and compensation objectives are achieved.
- Often used to obtain appropriate regulatory approvals and permits.
- Long-term or compliance monitoring is required to evaluate the success or effectiveness of habitat compensation, or to measure long-term environmental effects.
- Supports research efforts.
- Standardized methods are established set in modules in order to address the monitoring needs of any project in an efficient manner. Parameters to be monitored include Physical, Biological, and Biophysical.
- TRCA Monitoring of Waterfront Toronto Projects include:
 - West 8 Project Central Waterfront
 - Lake Ontario Park
 - Lower Don River Naturalization
 - Mimico Linear Park
 - Western Beaches Rowing Facility
 - Port Union Waterfront Trail
- Aquatic Habitat Toronto facilitates the approval process of waterfront projects. As a result compliance monitoring is required for the projects and Aquatic Habitat Toronto in cooperation with Toronto and Region Conservation Authority identify the monitoring needs of the project and oversee implementation the monitoring plan.

By Rick Portiss



Fisheries and Oceans Canada / Pêches et Océans Canada

